

## MARINE DGPS/WAAS NAVIGATOR

### Model GP-37

- Automatic or manual selection of either WAAS or DGPS
- 4.5" Silver Bright LCD display
- Multiple display modes to suit a variety of navigational requirements
- Up to 999 waypoints, 50 routes and 1,000 track points
- One-touch waypoint entry
- Customizable NavData Displays
- Track Back feature stores waypoints at user defined intervals for early trace-back cruise
- Waypoint & Route upload/download through RS-232C port



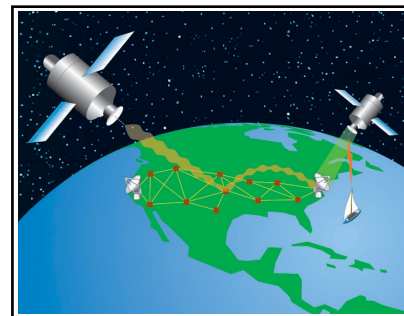
The GP-37 is an advanced GPS navigator designed for coastal ships, fishing boats and pleasure craft. It is equipped with a WAAS receiver and a DGPS receiver as standard supply. The powerful processor performs high-speed processing, position fixing and augmentation. It utilizes both WAAS and differential radio beacon correction methods.

This compact and cost-effective unit offers extremely accurate position fixes - 10 m for the basic GPS, 3 m where WAAS service is available and 5 m with DGPS. It should be noted that DGPS is more reliable and accurate, as the WAAS system is still currently under development. There is no guarantee of accuracy, integrity, continuity or availability of the WAAS signal. For that reason, the GP-37 runs with DGPS as the default setting in auto selection mode. If the DGPS signal can not be received for any reason, the WAAS mode is automatically selected. Manual setting is also available.

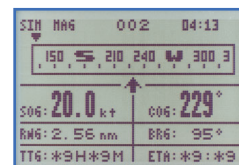
The Display modes include Plotter, two Customizable displays, Steering, Highway and Speedometer Mode. The Steering Display mode provides an intuitive indication of course to steer and cross-track-error (XTE). The Customizable display allows you to select the display layout so the navigation data you are interested in is displayed in large characters.

### WAAS (Wide Area Augmentation System)

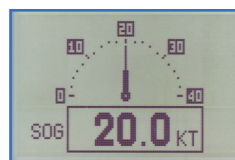
WAAS is a GPS navigation system with a differential correction by means of geostationary satellites. The US FAA has been testing this system and expects more field tests in 2003. Similar systems, using Satellite-Based Augmentation Systems (SBAS), are under development in Japan (MSAS: MSAT Satellite-based Augmentation System) and Europe (EGNOS: European Geostationary Navigation Overlay System). They are said to be fully interoperable and compatible. MSAS and EGNOS are expected to become fully operated in 2004 or after. As the WAAS utilizes the same frequency as the GPS, a single antenna can receive GPS and WAAS signals. Currently two Inmarsat GEO satellites are available, i.e., AOR-W and POR. Major contributors of an error in a single frequency GPS system is receiver clock drift and signal delays by refraction. The WAAS reference stations on the earth monitor the GPS constellation and route GPS error data to the satellites via the master earth station. The Inmarsat or communication satellite broadcasts the differential corrections to marine and aviation users.



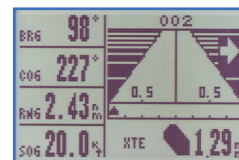
For more info, visit the FAA web at <http://gps.faa.gov>



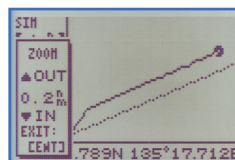
Steering



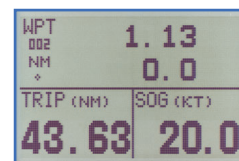
Speedometer



Highway



Plotter



Customizable display



The future today with FURUNO's electronics technology.

**FURUNO ELECTRIC CO., LTD.**

9-52 Ashihara-cho, Nishinomiya City, Japan Phone: +81 (0)798 65-2111  
 Fax: +81 (0)798 65-4200, 66-4622 URL: [www.furuno.co.jp](http://www.furuno.co.jp)

Catalogue No. N-851b

TRADE MARK REGISTERED  
 MARCA REGISTRADA

# SPECIFICATIONS OF GP-37

## GPS/WAAS

### Receiver Type

GPS: Twelve discrete channels, C/A code, all-in-view. WAAS receiver: standard fitted in Display Unit L1 (1575.42 MHz)  
12 seconds typical (Warm start)  
999 knots  
WGS-84 (and others)

### Receive Frequency

### Time to First Fix

### Tracking Velocity

### Geodetic Systems

## DGPS

### Reference Stations

Automatic or manual selection (All DGPS stations in the world are in memory)

### Frequency Range

283.5 - 325.0 kHz (all ITU regions), 0.5 kHz steps

### Coverage

200 km approx from a reference station

### Modulation and format

Minimum Shift Keying (MSK) in RTCM SC104 format

## Accuracy

GPS: 10 m (95%)

DGPS: 5 m (95%)

WAAS: 3 m (95%)

## Display

4.5" diagonal 95(W) x 60(H) mm LCD, 120 x 64 pixels

## Display Modes

Plotter, Highway, Steering Display, Nav Data Display and 2 Customizable Display Modes

## Memory Capacity

1,000 ship's track points, 999 waypoints with comments  
50 routes, 30 waypoints/route

## Alarms

Arrival, Anchor watch, XTE, Speed, WAAS/DGPS, Time, Trip, Odometer

## Language

English, Spanish, French, German, Dutch, Italian, Portuguese, Vietnamese, Indonesian, Japanese

## Interface

Output (NMEA 0183 ver 1.5/2.0/2.1):

AAM, APB, BOD, BWC, GGA, GLL, GTD, RMA, RMB, RMC, VTG, XTE, ZDA

Input:

YMWPL (YEOMAN wpt data in NMEA 0183)

DGPS data in RTCM SC104 ver 2.1

## ENVIRONMENT (IEC 60945 test method)

Temperature Display Unit: -15°C to +55°C

Antenna Unit: -25°C to +70°C

Waterproofing Display Unit: IPX5 (IEC 60529), CFR46 (USCG)

Antenna Unit: IPX6 (IEC 60529)

## POWER SUPPLY

12-24 VDC, 0.34 - 0.17 A

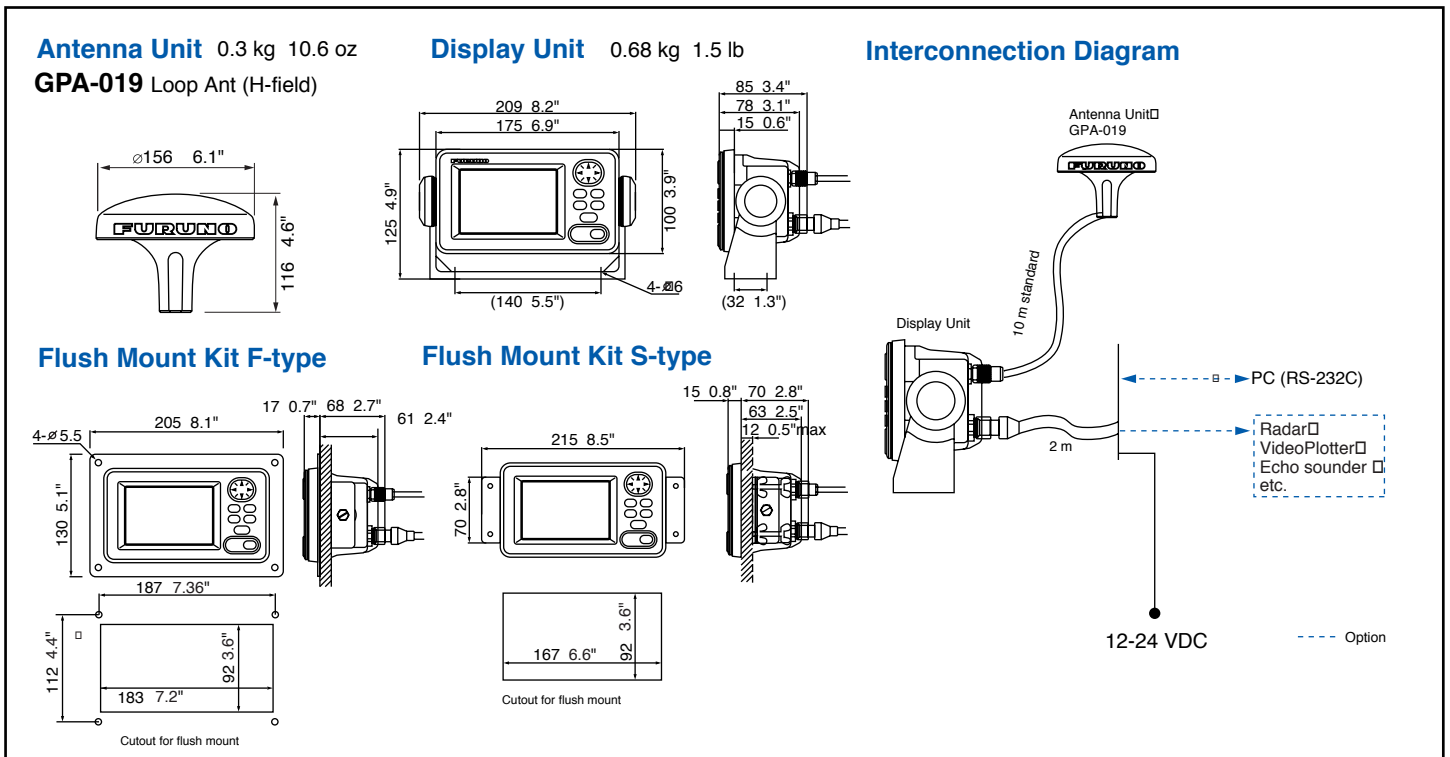
## EQUIPMENT LIST

### Standard

- |   |        |
|---|--------|
| 1. Display Unit                                   | 1 unit |
| 2. GPA-019 Loop Antenna (H-field) with 10 m cable | 1 set  |
| 3. Installation Materials and Spare Parts         | 1 set  |

### Option

- Antenna Base  
CP20-01111 (Pipe mount), No. 13-QA330 (Deck mount),  
No. 13-QA310 (Offset bracket), No. 13-RC5160 (Handrail mount)
- Flush Mount kit F type (OP20-18/29) or S type (OP20-17)



SPECIFICATIONS SUBJECT TO CHANGE WITHOUT NOTICE

**FURUNO U.S.A., INC.**  
Camas, Washington, U.S.A.  
Phone: +1 360-834-9300 Telefax: +1 360-834-9400

**FURUNO (UK) LIMITED**  
Denmead, Hampshire, U.K.  
Phone: +44 2392-230303 Telefax: +44 2392-230101

**FURUNO FRANCE S.A.**  
Bordeaux-Mérignac, France  
Phone: +33 5 56 13 48 00 Telefax: +33 5 56 13 48 01

**FURUNO ESPANA S.A.**  
Madrid, Spain  
Phone: +34 91-725-90-88 Telefax: +34 91-725-98-97

**FURUNO DANMARK AS**  
Hvidovre, Denmark  
Phone: +45 36 77 45 00 Telefax: +45 36 77 45 01

**FURUNO NORGE A/S**  
Ålesund, Norway  
Phone: +47 70 102950 Telefax: +47 70 127021

**FURUNO SVERIGE AB**  
Västra Frölunda, Sweden  
Phone: +46 31-7098940 Telefax: +46 31-497093

**FURUNO FINLAND OY**  
Espoo, Finland  
Phone: +358 9 4355 670 Telefax: +358 9 4355 6710

0308XSS Printed in Japan